



BI360 DASHBOARDS

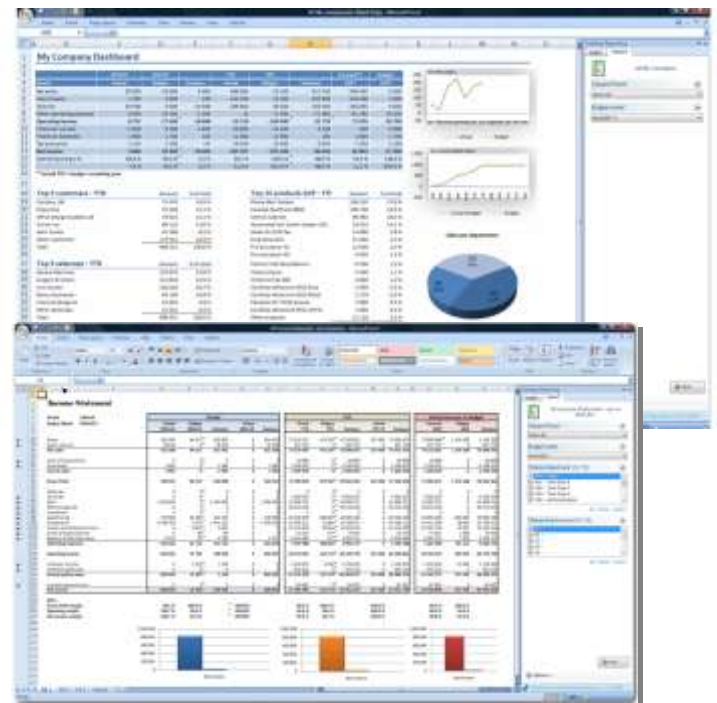
BI360 dashboards act as a unifying medium between two of an organization’s most important assets, its people and its data. BI360 harvests data at sensible intervals and applies business logic and other filters to it. This process yields timely, actionable, contextualized information. This vital information will better equip your organization’s personnel to make decisions. Driving success and averting failure.



BI360 DASHBOARD FEATURES

The extensible data architecture of BI360 ensures that it can tie into your ERP, CRM or any other data bearing system in your enterprise. This versatility ensures completeness of information.

- ✓ BI360 features a customizable front end ensuring any specific UI/UX need can be met.
- ✓ Lightweight server-based dashboard delivery ensures minimal downtime and greater maintainability.



BI360 REPORTING

BI360 offers predefined Microsoft® Excel-based reports working directly on top of any type of database, OLAP cube and vendor system. The reports are developed with its’ own report definition language (RDL) and execute all the business logic through web services. The result is professionally presented in Microsoft® Excel. The combination of standard Microsoft® Excel features and RDL makes it possible to develop all kinds of report layouts and business logic, from simple straight forward listings to advanced dashboards and KPI-reports. The reports work directly on the source data and a single report can access multiple databases, as often is desirable in order to produce advanced dashboards and key figure reports.

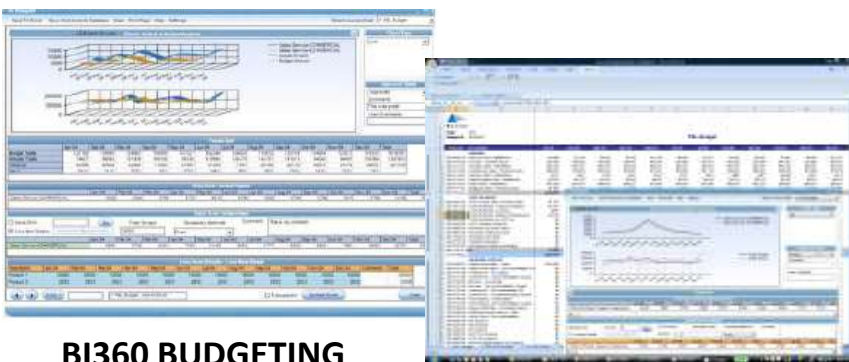
BI360 REPORTING FEATURES

- ✓ Supports Microsoft Excel 2003 or Microsoft Excel 2007
- ✓ Reports are launched from an intranet site, a webpage or locally from your PC as standard Microsoft Excel files. When launched from your local PC the reports automatically connect to the database through web services
- ✓ User access (security) is based on the system you are running the reports on
- ✓ Reports to be configured by the user through a wizard
- ✓ End users can customize their own versions or predefined, standard reports
- ✓ Reports parameters in the Microsoft Excel task panel make the reports highly dynamic and flexible. One report could easily serve many purposes just by changing parameter values
- ✓ One report can be connected to multiple databases
- ✓ Report execution through web services
- ✓ Distribution of reports as ordinary Microsoft Excel files



BI360 BUDGETING BENEFITS

- ✓ Very rich and analytical end user environment
- ✓ Integrates with your existing Excel budget
- ✓ User inputs directly to Excel or through Excel popup window with special budgeting features
- ✓ Spread totals or create budgets from historical trends in seconds with Slider and Spreading
- ✓ Store text comments at any level for later use with budget reports
- ✓ Comes with budget process control reports
- ✓ Upon user saving data, budgets are immediately available for approval/reporting
- ✓ Live charting lets user discover trends and compare history to budgets while budgeting
- ✓ Quick implementations by linking to existing Excel budget models



BI360 BUDGETING

BI360 provides your organization with an affordable, high value-added budgeting solution with Line Item Detail, Text Comments, Approval Process and more. No other budgeting tool provides this tight integration of Actual (read only) and Budgets (read/write) to the general ledger.